



# People Manage Data, Systems Help

## Institutional Research Data Management

October 18, 2022

**Michael Hofmockel**

Research Data Lead

**Shannon Sheridan**

Research Data Librarian



PNNL is operated by Battelle for the U.S. Department of Energy

# The rise of FAIR principles

## FAIR DATA PRINCIPLES

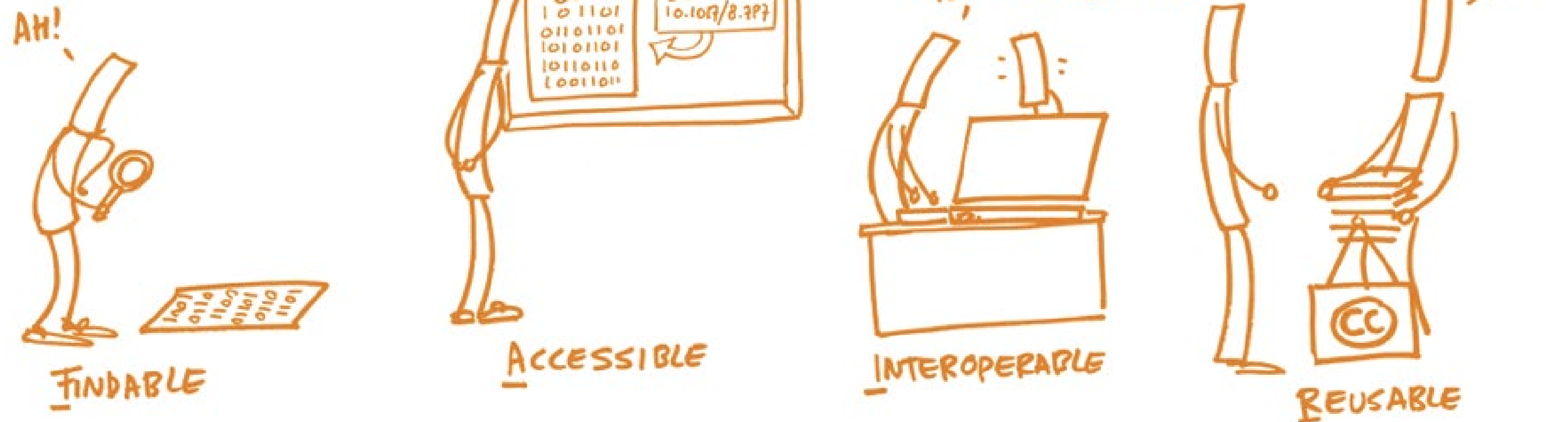


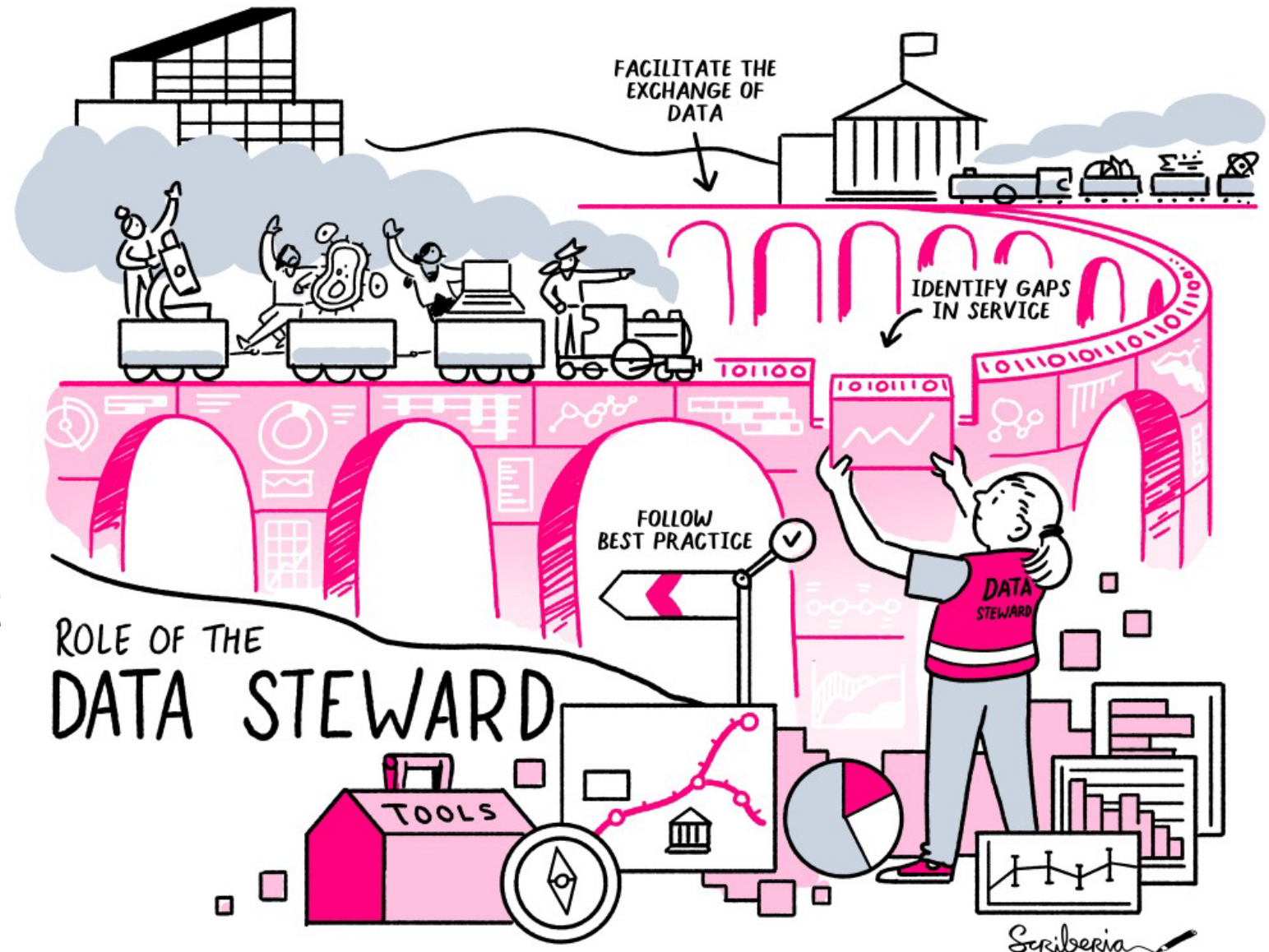
Image: <https://book.fosteropenscience.eu/>

- Increasingly expected from funders and publishers
- [OSTP 2022 Guidance](#)
- Rising interest in technical solutions



# Stewardship before technology

- Technology alone falls short of creating FAIR products
- Need expertise to:
  - Define policy and procedures
  - Tailored support for projects
  - Data Literacy
  - Technology training
- Without both, researchers cannot create FAIR products



This image was created by [Scriberia](#) for The Turing Way community and is used under a CC-BY license.

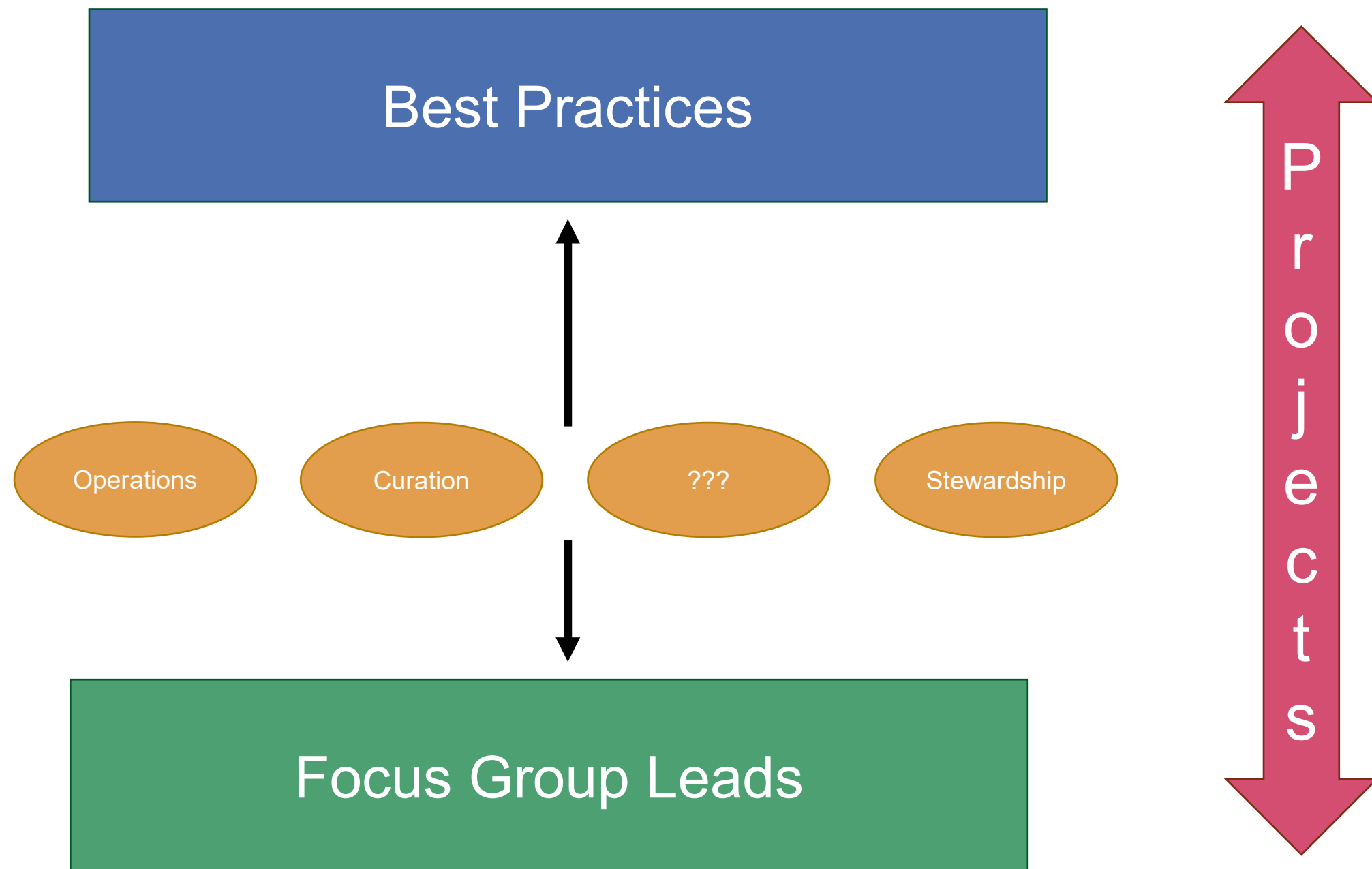


# Who is a PNNL data steward?

*Anyone in the possession of data*



# DataHub Advance Team Current Structure



# Supporting Lab Projects

- Over twenty projects in nine months... and more being started
- Flexible, tailored solutions for:
  - Workflows
  - Project policies
  - Templates
  - Training



**DATAHUB  
ADVANCE TEAM**  
@PNNL



# Educational Resources & Guides

DATAHUB

Categories   Datasets   Data Sources   Projects   Publications   People

Search by keywords, authors and much more... SEARCH

Guides

Search Guides:  Guide Type: - Any - APPLY

DataHub External Publishing Policy

DataHub Use Policy

Research Data Management Best Practices

How to Use DataHub

Advance Team Templates and Documentation

Research Computing Data Storage Systems

Living Lab ETL Module

Troubleshooting

Data Management Plan Templates

Data Management Plan Guidance

Prox Access Tree Rings

## GUIDE

### How to Use DataHub

A series of guides describing how to use various features and functions DataHub.

[Content Types in DataHub >](#)

[← Back to Guides](#)

HOW TO USE DATAHUB

[Content Types in DataHub](#)

[Creating and Managing a Person Content Type](#)

[Creating and Managing a Project Presence on DataHub](#)

[Developer API Access](#)

[DataHub Security and Integrity](#)

[Group Creation and Management](#)

[Publishing Data on DataHub](#)

[Upload Documentation](#)

## GUIDE

### Research Data Management Best Practices

A collection of guides with information on best practices for research data management practices during a research project. If you are interested in data management, consider joining [the PNNL Data Community of Practice](#).

[Data Dictionaries >](#)

[← Back to Guides](#)

RESEARCH DATA MANAGEMENT BEST PRACTICES

[Data Dictionaries](#)

[Data Categories](#)

[Data License Guidance](#)

[Determining Authorship on a Dataset](#)

[File Naming Convention Guidelines](#)

[README Best Practices](#)

[Software License Guidance](#)

## Assisted by Technology

- Meet key needs of the Research Data Life Cycle
- Provides capabilities for data and artifacts outside individual projects



**DATAHUB**  
@PNNL



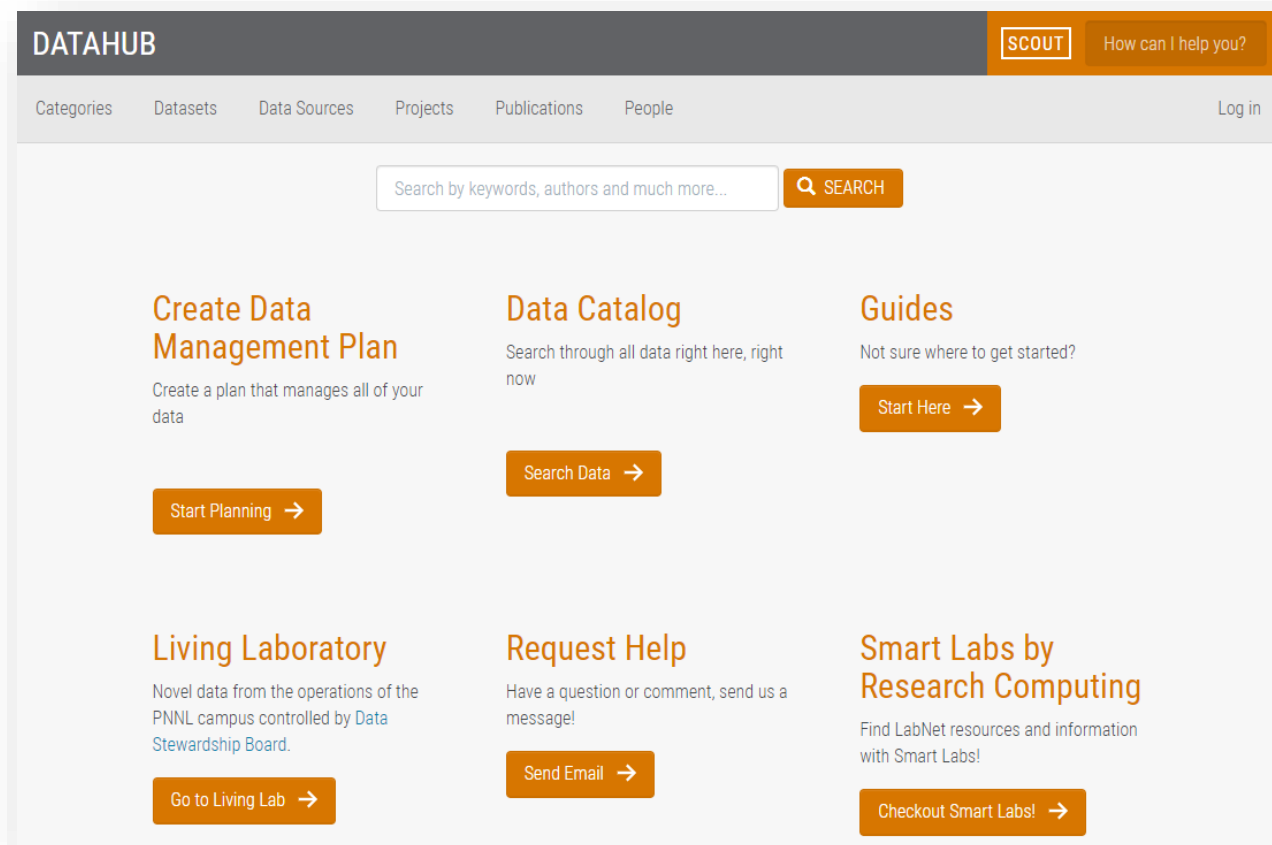




# DataHub Portals

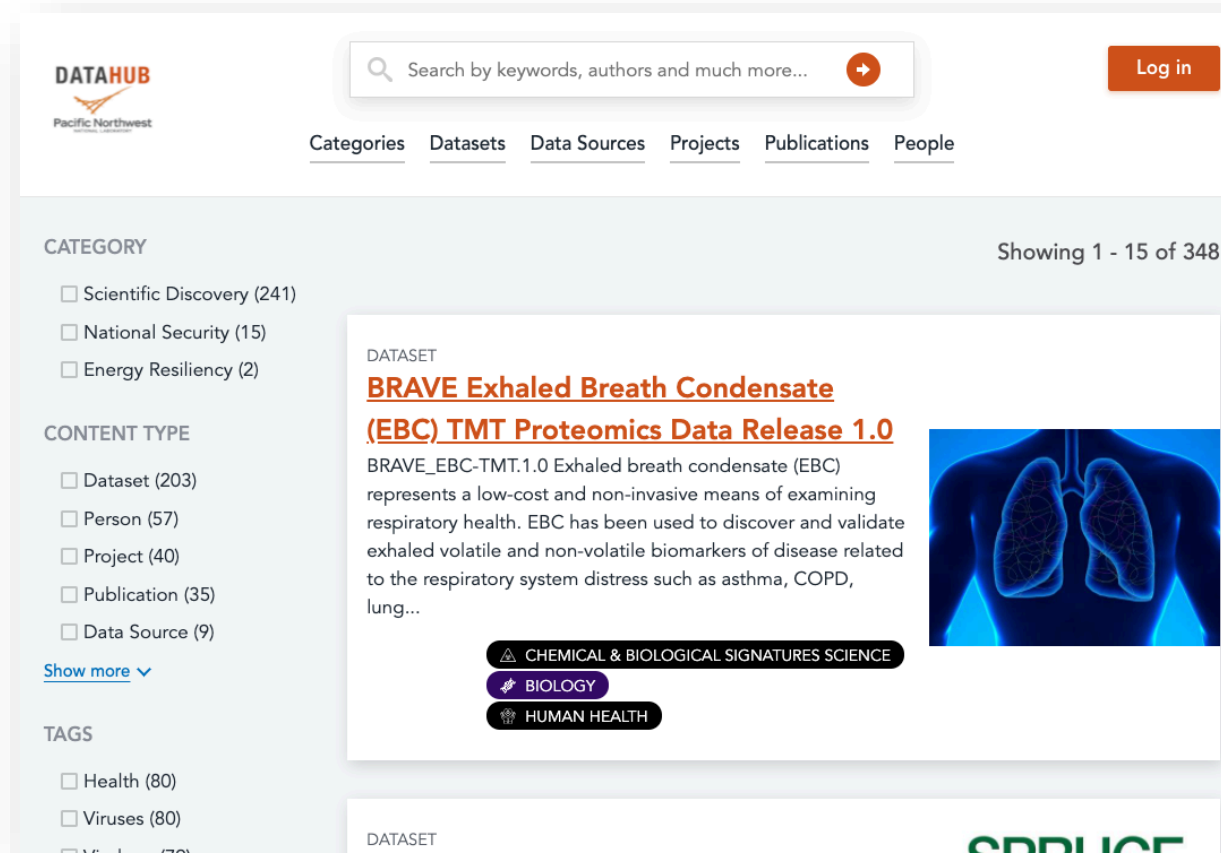
Internal Data Portal:

<https://data.pnl.gov>



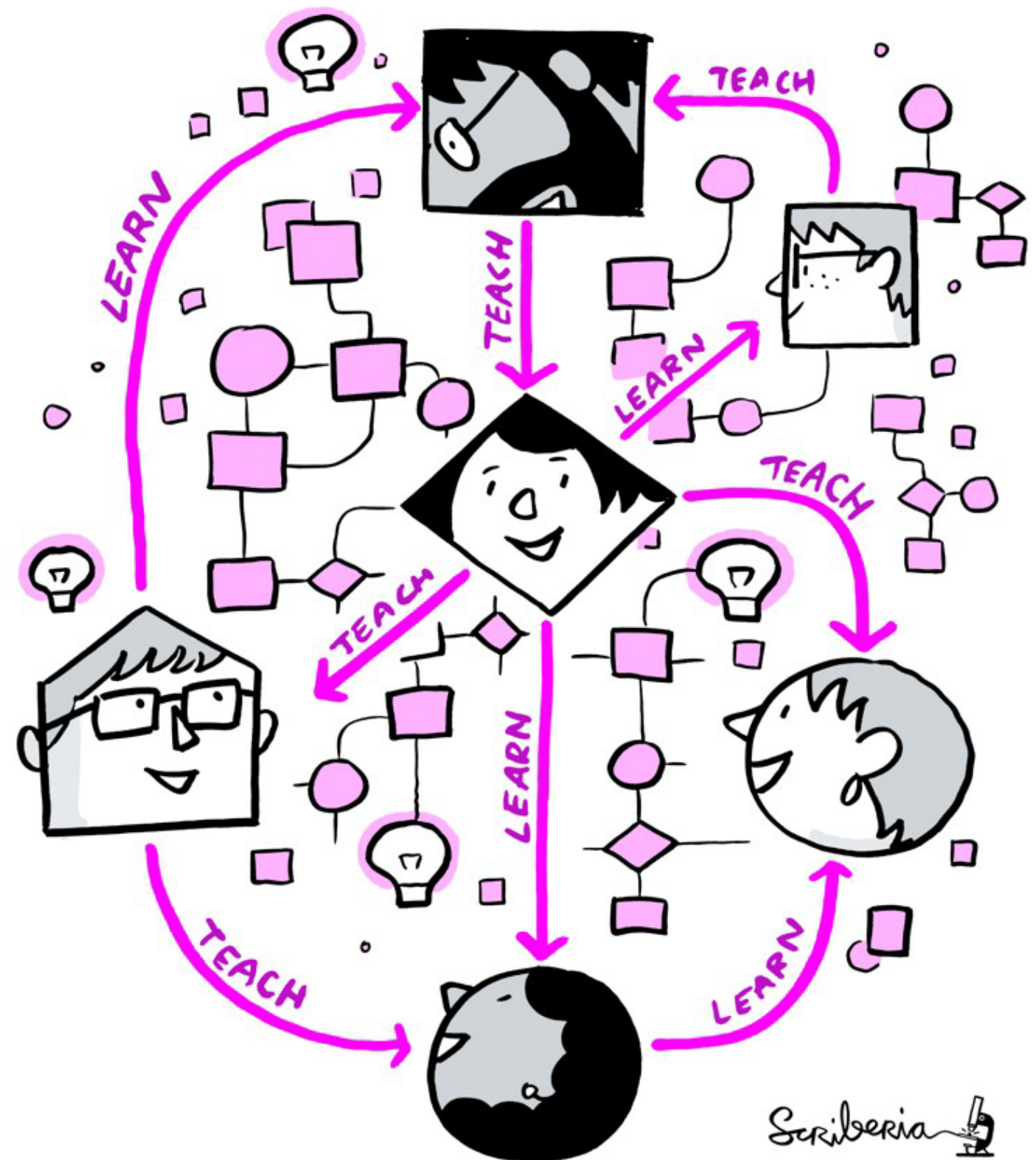
External Data Portal:

<https://data.pnnl.gov>



# Investment in the Future

- Clear demand
- As more projects receive support, we need more people
- Stewardship must be prioritized alongside infrastructure
  - Staff
  - Funding
  - Education





# Thank you